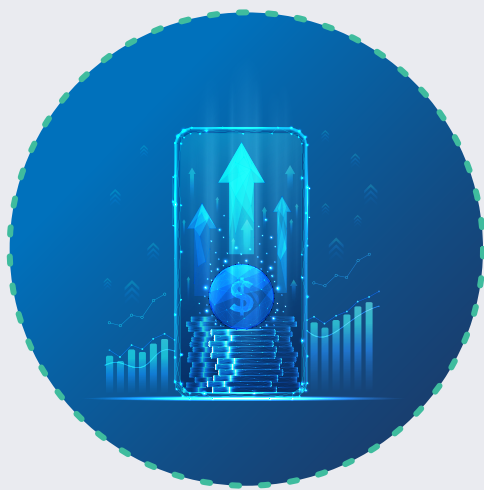


# RTP® NETWORK BY THE NUMBERS

Apr. 1 - Jun. 30, 2024  
Data reflects credit unions that Corporate One has connected to the RTP network: 20 credit unions prior to 2024 and 24 credit unions in 2024.



## GROWTH ON THE RISE

RTP transactions climbed steadily in the second quarter of 2024.

Real-Time Payments Volume and Dollars



## BUSINESSES LEAD THE CHARGE

**\$27.8**  
MILLION  
Amount that businesses sent via the RTP network.

**\$12.7**  
MILLION  
Amount consumers sent via the RTP network.



## BEYOND BUSINESS HOURS<sup>1</sup>

**57%**  
OF RTP TRANSACTIONS  
happen outside of regular business hours.



**23%**  
OF RTP TRANSACTIONS  
occurred on Saturdays and Sundays.

## THE POWER OF IMMEDIACY

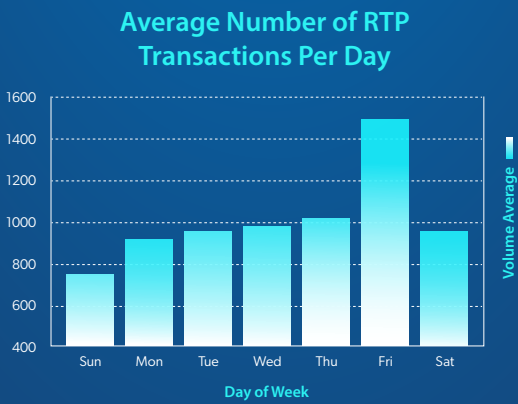
**\$441.04**  
Average amount business and consumers sent via the RTP network.

### Who's Sending Real-Time Payments?

Top 5 senders to Corporate One members:

1. Square
2. venmo
3. dailypay.
4. nuvei
5. PayPal

### Most Popular Days of the Week for Sending RTP Transactions



### Joining the Movement: Who connected to the RTP network in Q2?

Corporate One is excited to have **connected 13 new credit unions** to the RTP network in Q2 of 2024—**bringing our total to 44 credit unions.**

Corporate One has connected approximately **22 percent** of all credit unions currently connected to the RTP network.

## EMPOWER YOUR MEMBERS

Credit unions across the country are recognizing the power of real-time payments. Join the RTP network and give your members faster, more secure transactions—any day, any time.

This year, Corporate One facilitated the connection of three credit unions to the FedNow® Service, with a growing number poised to join our implementation queue. In addition, we are planning to unveil a FedNow Service by the Numbers infographic later this year.



<sup>1</sup>Statistics based on Eastern Standard Time. All weekend transactions are considered after-hours.

CONTACT US TODAY AT  
**HELLO@CORPORATEONE.COOP**

TO LEARN MORE ABOUT HOW YOUR CREDIT UNION CAN EMBRACE THE POWER OF REAL-TIME PAYMENTS.

CorporateOne