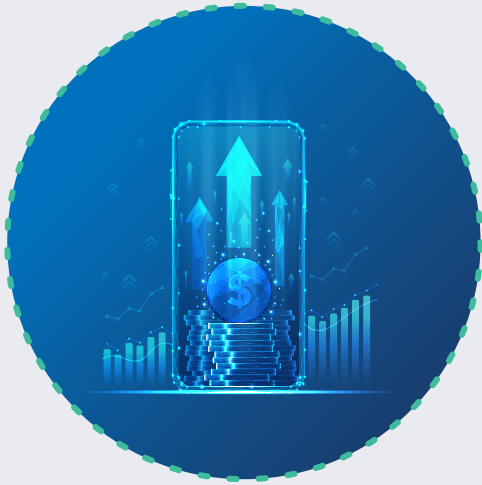


RTP® NETWORK BY THE NUMBERS

Apr. 1 - Jun 30, 2025

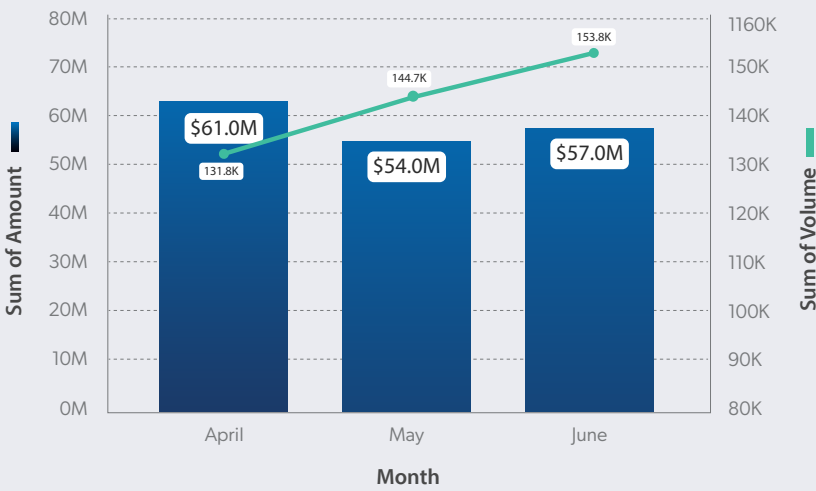
Data reflects the 88 credit unions that Corporate One has connected to the RTP network



GROWTH ON THE RISE

RTP transactions climbed steadily in the second quarter of 2025, increasing 30 percent.

Real-Time Payments Volume and Dollars



BUSINESSES DRIVING THE FUTURE

\$150.9
MILLION

Amount that businesses sent via the RTP network, representing 88 percent of the value.

\$21.5
MILLION

Amount consumers sent via the RTP network.



OFF THE CLOCK¹

55%

OF RTP TRANSACTIONS happen outside of regular business hours.



23%

OF RTP TRANSACTIONS occurred on Saturdays and Sundays.

THE IMPACT OF IMMEDIACY

\$406^{.84}

Average amount businesses and consumers sent via the RTP network.

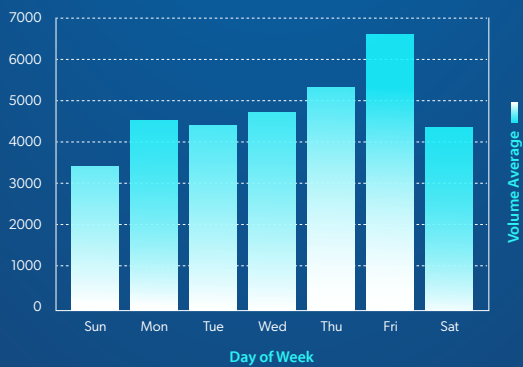
Who's Sending Real-Time Payments?

Top 5 senders to Corporate One members:

- venmo**
- Square
- dailypay.**
- PayPal
- EMPOWER

Most Popular Days of the Week for Sending RTP Transactions

Average Number of RTP Transactions Per Day



Joining the Movement: Who connected to the RTP network in Q1?

Corporate One is excited to have **connected 10 new credit unions** to the RTP network in Q2 of 2025—**bringing our total to 88 credit unions.**

Corporate One has connected approximately **26 percent** of all credit unions currently connected to the RTP network.

EMPOWER YOUR MEMBERS

Corporate One is also facilitating connections to the FedNow® Service. This year, we have successfully onboarded two new credit unions, increasing the total number of member credit unions we've connected to the FedNow Service to nine. Additionally, we are planning to unveil a FedNow Service by the Numbers infographic later in 2025.

Credit unions across the country are recognizing the power of real-time payments. Corporate One is ready to help your credit union join the RTP network and FedNow Service.



¹Statistics based on Eastern Standard Time. All weekend transactions are considered after-hours.

CONTACT US TODAY AT
HELLO@CORPORATEONE.COOP

TO LEARN MORE ABOUT HOW YOUR CREDIT UNION CAN EMBRACE THE POWER OF REAL-TIME PAYMENTS.

Corporate**One**