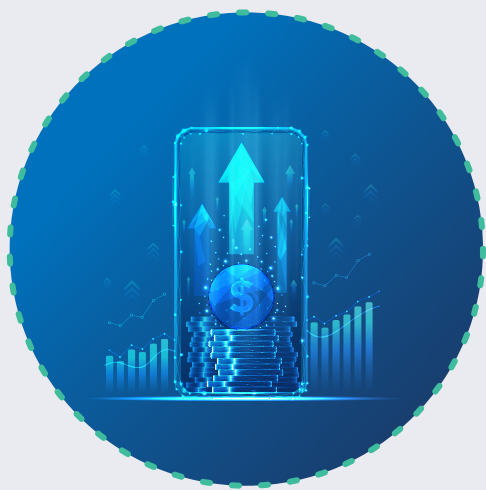


RTP® NETWORK BY THE NUMBERS

Jan. 1 - Mar. 31, 2024

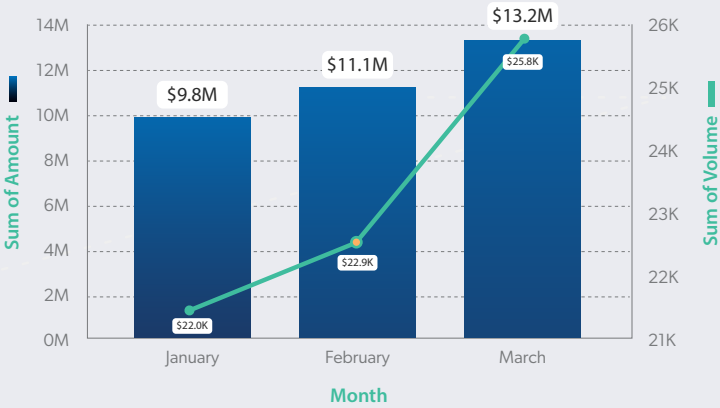
Volume reflects 18 credit unions
connected to the RTP network in 2023
and 7 credit unions connected in 2024



GROWTH ON THE RISE

RTP transactions climbed steadily
in the first quarter of 2024.

Real-Time Payments Volume and Dollars



BUSINESSES LEAD THE CHARGE

\$23.5
MILLION

Amount that businesses sent
via the RTP network.

\$10.5
MILLION

Amount consumers sent via
the RTP network.



BEYOND BUSINESS HOURS¹

59%

OF RTP TRANSACTIONS
happen outside of regular
business hours.



23%

OF RTP TRANSACTIONS
occurred on Saturdays and
Sundays.

THE POWER OF IMMEDIACY

\$484.30

Amount consumers sent via
the RTP network.

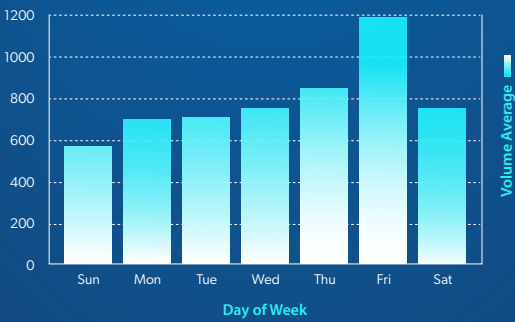
Who's Sending Real-Time Payments?

Corporate One members are receiving
transactions from top senders:

1. **dailypay.**
2. **Square**
3. **EMPOWER**
4. **MoneyLion®**
Instacash
5. **FANDUEL**
Credit via Trustly

Most Popular Days of the Week for Sending RTP Transactions

Average Number of RTP
Transactions Per Day



Joining the Movement: Who connected to the RTP network in Q1?

Corporate One is excited to have
connected 11 new credit unions
to the RTP network in Q1 of
2024—**bringing our total to 31
credit unions.**

Corporate One has connected
20 percent of all credit unions
currently connected to the
RTP network.

EMPOWER YOUR MEMBERS

Credit unions across the country are recognizing the power of real-time
payments. Join the RTP network and give your members faster, more secure
transactions—any day, any time.

This month, Corporate One facilitated the connection of three credit unions to
the FedNow Service, with a growing number poised to join our
implementation queue. In addition, we are planning to unveil a FedNow
Service by the Numbers infographic later this year.



¹Statistics based on Eastern Standard Time. All weekend transactions are considered after-hours.

CONTACT US TODAY AT
HELLO@CORPORATEONE.COOP

TO LEARN MORE ABOUT HOW YOUR CREDIT UNION CAN EMBRACE THE POWER OF REAL-TIME PAYMENTS.

Corporate**One**